

**BUILDING SIZE:**  
**14.4m LONG 8.4m WIDE**

**TOTAL AREA: 120.96 m<sup>2</sup>**



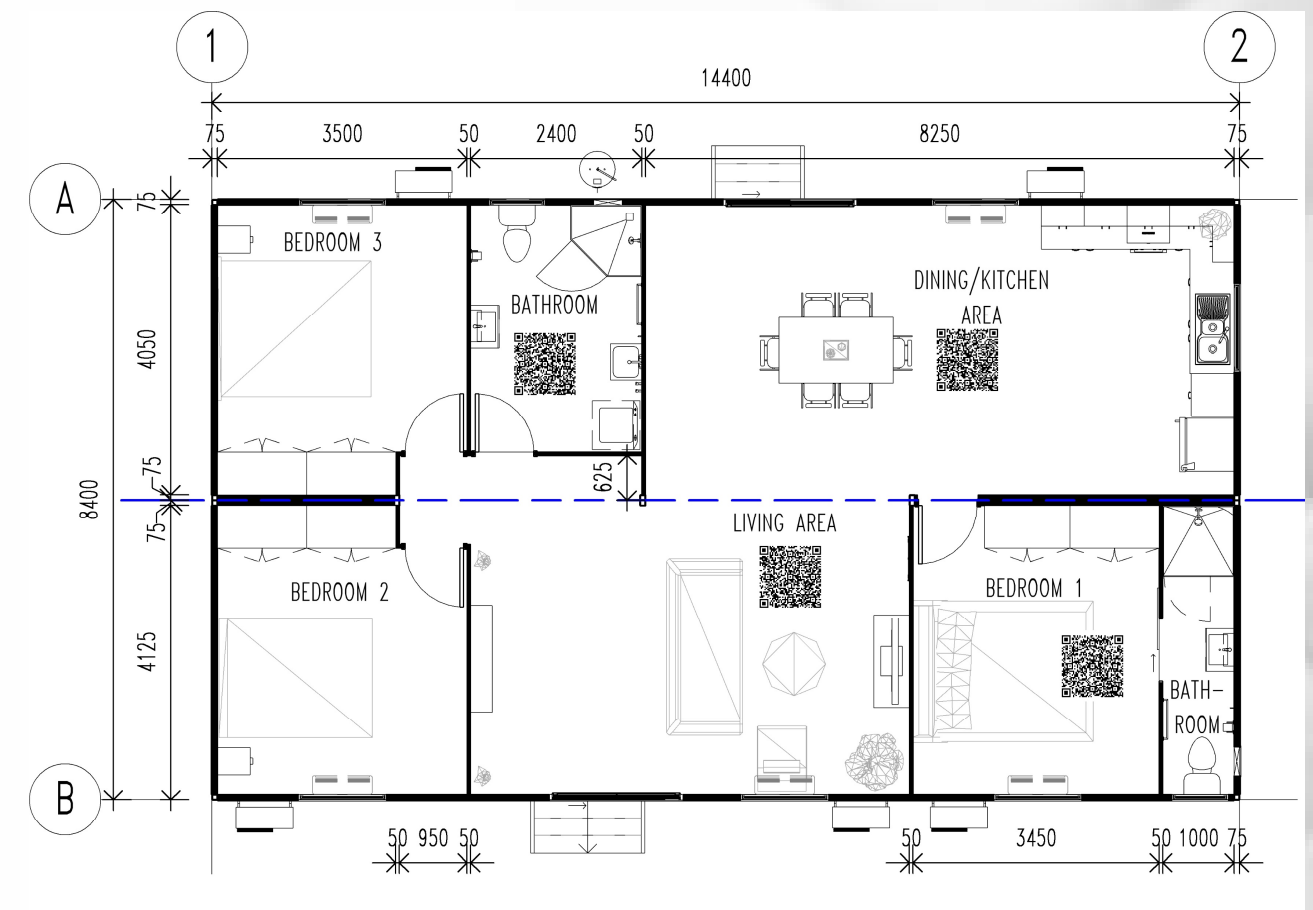
**3 BEDROOM**



**2 BATHROOM**

### ALTERNATIVE ENHANCEMENTS:

- CFC floor sheeting.
- Gyprock ceiling lining.
- Shadowline cornice.
- Colourbond cladding to external Askin wall panels.
- Steel stud external and internal wall panels with linings.
- 2700 high ceilings with fans.
- Security screens.
- Louvre windows.
- Gas stove.
- Gas hot water system.
- Solar hot water system.
- Commercial wood look vinyl.
- Laundry Trough
- Verandah – Timber/Merbau Decking



The Acacia is a spacious 3 bedroom design with built in robes, an open plan Kitchen, dining and living area, Bathroom with indoor laundry.

Northern Transportables ABN 22 009 636 882

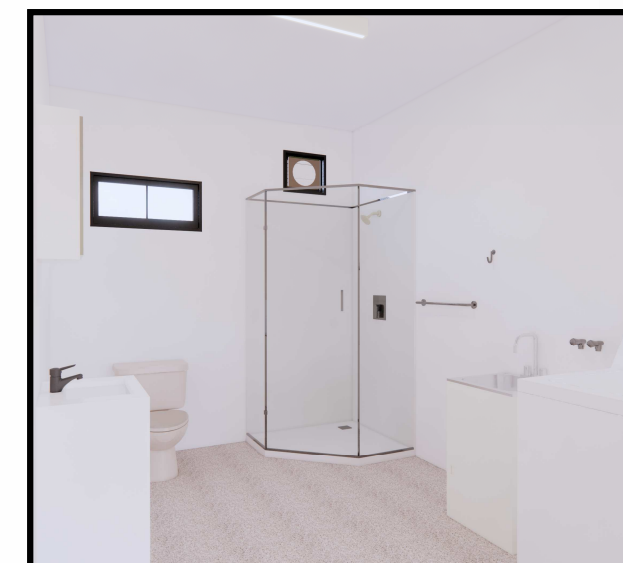
Head Office: 36 Lillwall Road East Arm NT 0822 | Sales Village Display: 840 Stuart HWY Pinelands NT 0829

Ph 08 8995 6500 | [enquiries@northerntransportables.com](mailto:enquiries@northerntransportables.com) | [www.northerntransportables.com.au](http://www.northerntransportables.com.au)

### PREMIER RANGE THE ACACIA

#### BUILDING STANDARD SPECIFICS:

- Soft vinyl to bedrooms.
- Hard sheet vinyl coved to wet areas.
- 17mm structural ply flooring.
- 3mm aluminium composite panel ceiling lining.
- External walls to be 75mm Askin panels.
- Internal walls to be 50mm Askin panels.
- 2400 high ceilings.
- Split air conditioner.
- All buildings designed and certified in accordance with NTH standard drawings.
- Built to BCA requirements.
- Plumbing to Australian Standards.
- Electrical wiring to Australian Standards.
- 50L electric hot water system.



#### ADDITIONAL SPECIFICS:

- R3.2 E-therm insulation with thermal break between ceiling joists.
- Aluminium cornice to ceilings and walls.
- Sliding glass windows.
- Glass sliding doors.
- Fly screens to windows.
- Split air conditioning.
- Laminated bench tops and cabinets.
- Acrylic shower enclosure.
- Chrome shower rose and tapware.
- Vanity cabinet and chrome flickmaster.
- Toilet pan and cistern.
- Double Bowl S/S sink and flickmixer.
- Built in wardrobe.
- Electric stove and range hood.
- Stairs.

Northern Transportables ABN 22 009 636 882

Head Office: 36 Lillwall Road East Arm NT 0822 | Sales Village Display: 840 Stuart HWY Pinelands NT 0829

Ph 08 8995 6500 | [enquiries@northerntransportables.com](mailto:enquiries@northerntransportables.com) | [www.northerntransportables.com.au](http://www.northerntransportables.com.au)

**PREMIER RANGE**  
**THE ACACIA**

**3D PRESENTATION:**

**Video:**



**PANORAMA VIEWS:**

**KITCHEN:**

<https://api2.enscape3d.com/v3/view/667f8b9d-f2a4-4337-a371-5392f3df993d>

**LIVING AREA:**

<https://api2.enscape3d.com/v3/view/a85a316a-41d2-4945-9f98-18e947b5fa48>

**BATHROOM:**

<https://api2.enscape3d.com/v3/view/1aff8df-55ec-4c37-8008-16a30cdc6b39>

**BEDROOM:**

<https://api2.enscape3d.com/v3/view/55a31bbc-054e-4aa6-80e9-df20dc65c939>

<I:\8. Marketing Brochure\Sales Buildings\Premier Range\The Acacia\Renders\Videos>

Northern Transportables ABN 22 009 636 882

Head Office: 36 Lillwall Road East Arm NT 0822 | Sales Village Display: 840 Stuart HWY Pinelands NT 0829

Ph 08 8995 6500 | [enquiries@northerntransportables.com](mailto:enquiries@northerntransportables.com) | [www.northerntransportables.com.au](http://www.northerntransportables.com.au)