

**BUILDING SIZE:**  
**14.4m LONG 4.2m WIDE + 14.4 x 4.2m VERANDAH**

**TOTAL AREA: 120.96 m<sup>2</sup>**



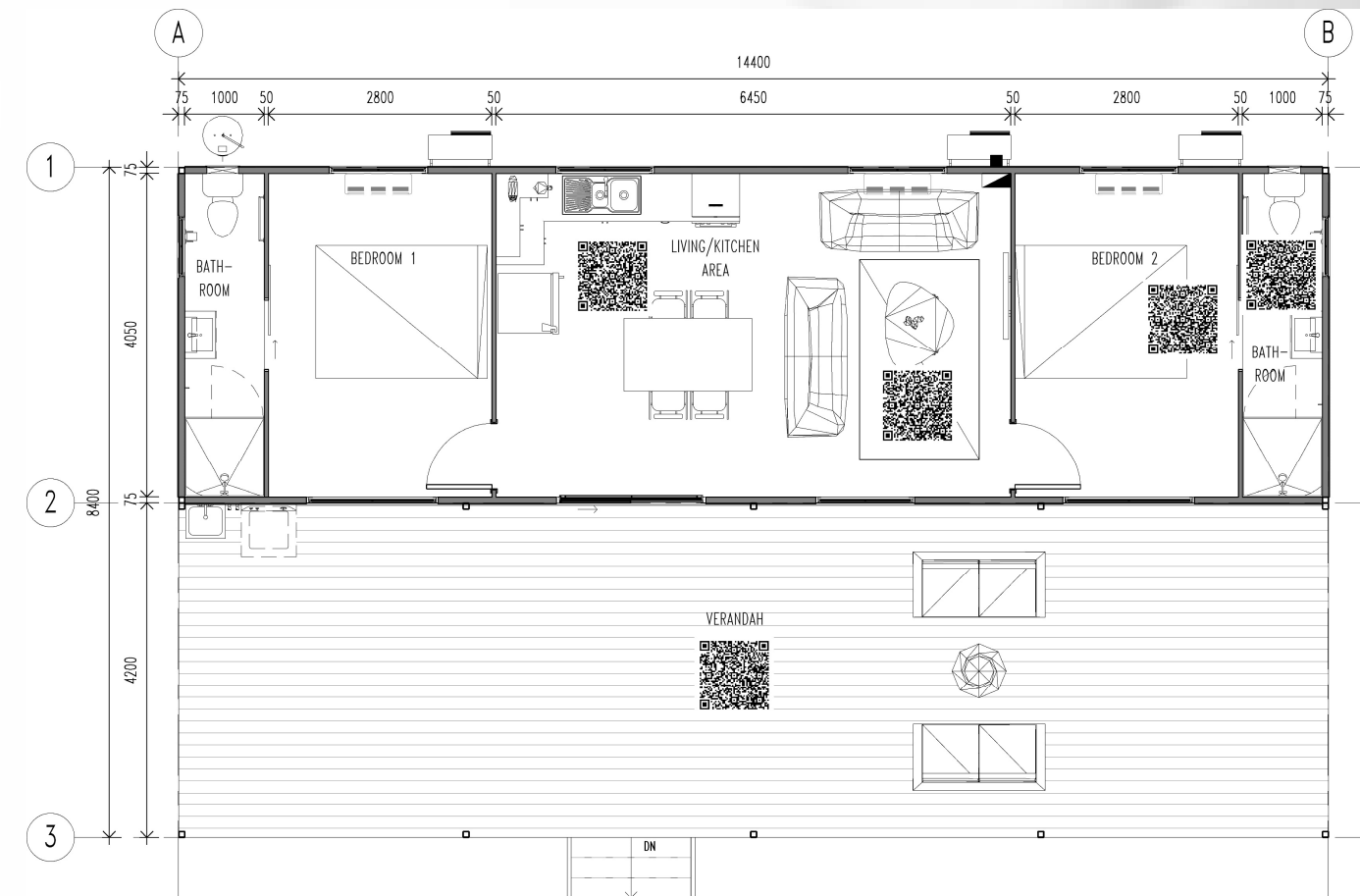
**2 BEDROOM**



**2 BATHROOM**

### ALTERNATIVE ENHANCEMENTS:

- CFC floor sheeting.
- Gyprock ceiling lining.
- Shadowline cornice.
- Colourbond cladding to external Askin wall panels.
- Steel stud external and internal wall panels with linings.
- 2700 high ceilings with fans.
- Security screens.
- Louvre windows.
- Gas stove.
- Gas hot water system.
- Solar hot water system.
- Commercial wood look vinyl.
- Laundry Trough



The Litchfield is a spacious 2 bedroom design with Ensuities, an open plan Kitchen, dining and living area, verandah with outdoor laundry.

Northern Transportables ABN 22 009 636 882

Head Office: 36 Lillwall Road East Arm NT 0822 | Sales Village Display: 840 Stuart HWY Pinelands NT 0829

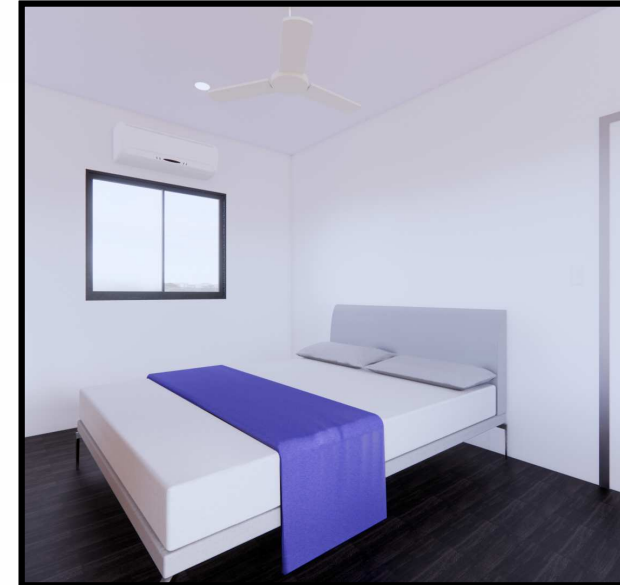
Ph 08 8995 6500 | [enquiries@northerntransportables.com](mailto:enquiries@northerntransportables.com) | [www.northerntransportables.com.au](http://www.northerntransportables.com.au)



## PREMIER RANGE THE LITCHFIELD

### BUILDING STANDARD SPECIFICS:

- Soft vinyl to bedrooms.
- Hard sheet vinyl coved to wet areas.
- 17mm structural ply flooring.
- 3mm aluminium composite panel ceiling lining.
- External walls to be 75mm Askin panels.
- Internal walls to be 50mm Askin panels.
- 2400 high ceilings.
- Split air conditioner.
- All buildings designed and certified in accordance with NTH standard drawings.
- Built to BCA requirements.
- Plumbing to Australian Standards.
- Electrical wiring to Australian Standards.
- 50L electric hot water system.



### ADDITIONAL SPECIFICS:

- R3.2 E-therm insulation with thermal break between ceiling joists.
- Aluminium cornice to ceilings and walls.
- Sliding glass windows.
- Glass sliding doors.
- Fly screens to windows.
- Split air conditioning.
- Laminated bench tops and cabinets.
- Acrylic shower enclosure.
- Chrome shower rose and tapware.
- Vanity cabinet and chrome flickmaster.
- Toilet pan and cistern.
- Double Bowl S/S sink and flickmixer.
- Built in wardrobe.
- Electric stove and range hood.
- Stairs.
- 60.48 m<sup>2</sup> Verandah – Timber/Merbau Decking

Northern Transportables ABN 22 009 636 882

Head Office: 36 Lillwall Road East Arm NT 0822 | Sales Village Display: 840 Stuart HWY Pinelands NT 0829

Ph 08 8995 6500 | [enquiries@northerntransportables.com](mailto:enquiries@northerntransportables.com) | [www.northerntransportables.com.au](http://www.northerntransportables.com.au)

**PREMIER RANGE**  
THE LITCHFIELD

3D PRESENTATION:

Video:



PANORAMA VIEWS:

KITCHEN:

<https://api2.enscape3d.com/v3/view/eb575d1b-c0ca-426d-a7f3-00c4bc104e56>

LIVING AREA:

<https://api2.enscape3d.com/v3/view/03a8b106-2a2d-422c-ab18-5c8672deaf96>

BATHROOM:

<https://api2.enscape3d.com/v3/view/9246c636-3a5b-4ebe-ab72-db61223cf4ab>

BEDROOM:

<https://api2.enscape3d.com/v3/view/1a72b36a-afad-4a2a-8b5b-a73d46801f12>

VERANDAH:

<https://api2.enscape3d.com/v3/view/0ccfa0cd-d44f-4177-8641-61e7aa6109b9>

<I:\8. Marketing Brochure\Sales Buildings\Premier Range\The Litchfield\Renders\Videos>

Northern Transportables ABN 22 009 636 882

Head Office: 36 Lillwall Road East Arm NT 0822 | Sales Village Display: 840 Stuart HWY Pinelands NT 0829

Ph 08 8995 6500 | [enquiries@northerntransportables.com](mailto:enquiries@northerntransportables.com) | [www.northerntransportables.com.au](http://www.northerntransportables.com.au)