

BUILDING SIZE:
16.2m LONG 6.6m WIDE + 16.2x3m VERANDAH

TOTAL AREA: 185.76 m²



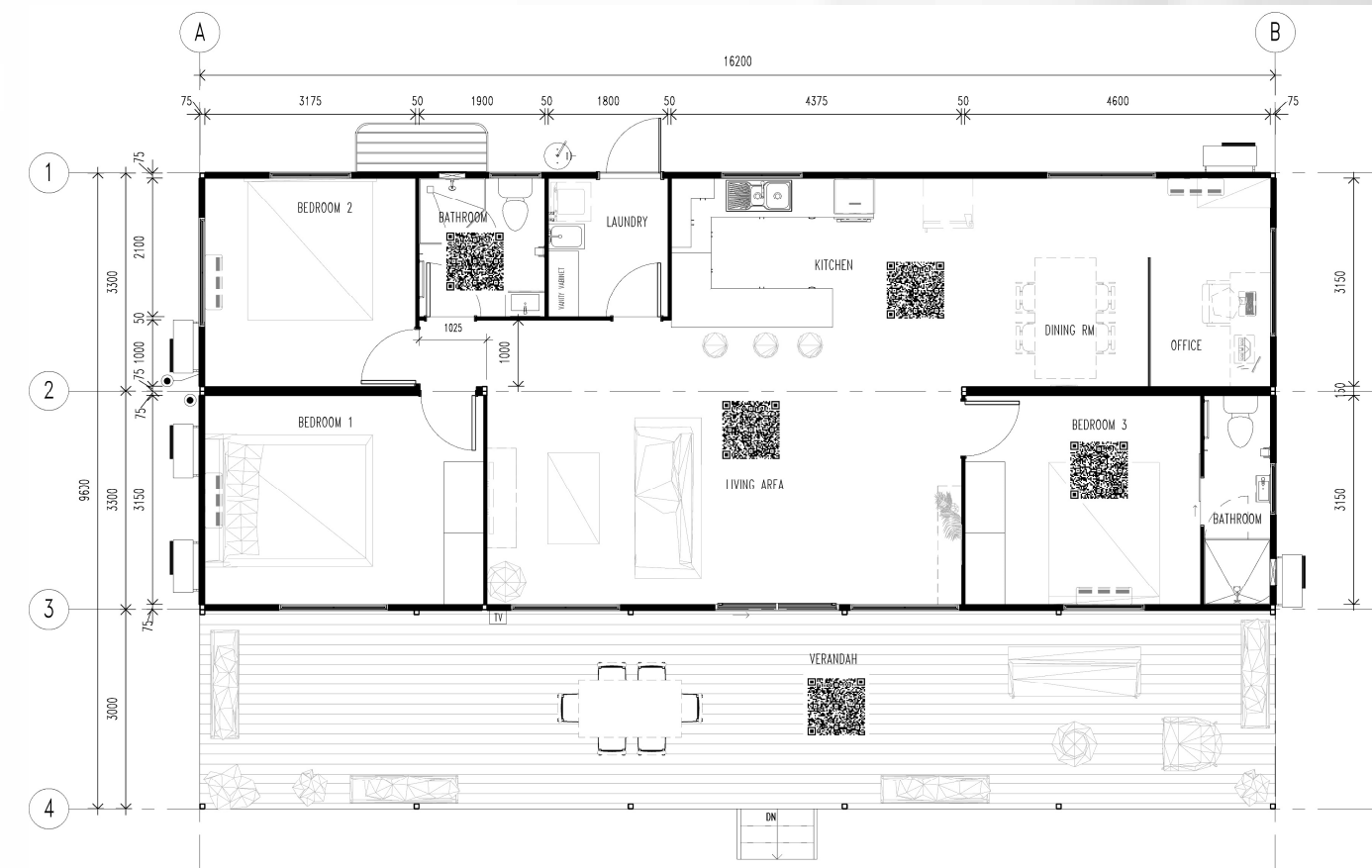
3 BEDROOM +
1 OFFICE



2 BATHROOM

ALTERNATIVE ENHANCEMENTS:

- CFC floor sheeting.
- Gyprock ceiling lining.
- Shadowline cornice.
- Colourbond cladding to external Askin wall panels.
- Steel stud external and internal wall panels with linings.
- 2700 high ceilings with fans.
- Security screens.
- Louvre windows.
- Gas stove.
- Gas hot water system.
- Solar hot water system.
- Commercial wood look vinyl.
- Laundry Trough



The Roper is a spacious 3 bedroom design with built in robes, an open plan Kitchen, dining and living area, Bathroom and separate indoor laundry. It also includes room for office use and spacious veranda

Northern Transportables ABN 22 009 636 882

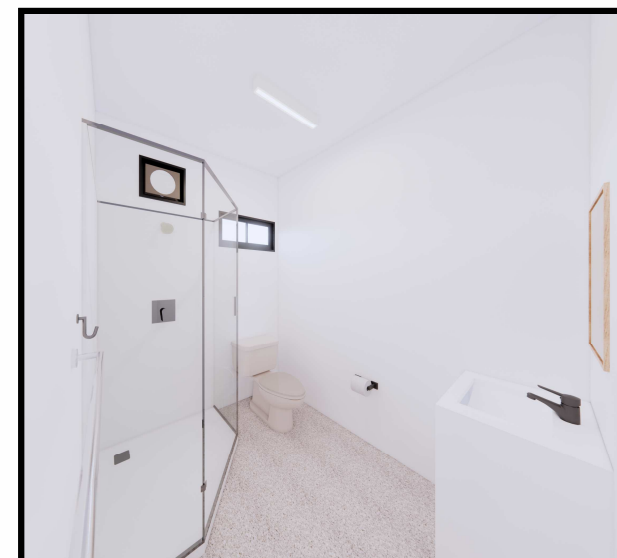
Head Office: 36 Lillwall Road East Arm NT 0822 | Sales Village Display: 840 Stuart HWY Pinelands NT 0829

Ph 08 8995 6500 | enquiries@northerntransportables.com | www.northerntransportables.com.au

PREMIER RANGE THE ROPER

BUILDING STANDARD SPECIFICS:

- Soft vinyl to bedrooms.
- Hard sheet vinyl coved to wet areas.
- 17mm structural ply flooring.
- 3mm aluminium composite panel ceiling lining.
- External walls to be 75mm Askin panels.
- Internal walls to be 50mm Askin panels.
- 2400 high ceilings.
- Split air conditioner.
- All buildings designed and certified in accordance with NTH standard drawings.
- Built to BCA requirements.
- Plumbing to Australian Standards.
- Electrical wiring to Australian Standards.
- 50L electric hot water system.
- 48.6 m² Verandah – Timber/Merbau Decking



ADDITIONAL SPECIFICS:

- R3.2 E-therm insulation with thermal break between ceiling joists.
- Aluminium cornice to ceilings and walls.
- Sliding glass windows.
- Glass sliding doors.
- Fly screens to windows.
- Split air conditioning.
- Laminated bench tops and cabinets.
- Acrylic shower enclosure.
- Chrome shower rose and tapware.
- Vanity cabinet and chrome flickmaster.
- Toilet pan and cistern.
- Double Bowl S/S sink and flickmixer.
- Built in wardrobe.
- Electric stove and range hood.
- Stairs.

Northern Transportables ABN 22 009 636 882

Head Office: 36 Lillwall Road East Arm NT 0822 | Sales Village Display: 840 Stuart HWY Pinelands NT 0829

Ph 08 8995 6500 | enquiries@northerntransportables.com | www.northerntransportables.com.au

PREMIER RANGE THE ROPER

3D PRESENTATION:

Video:



[I:\8. Marketing Brochure\Sales Buildings\Premier Range\The Roper - 16.2x9.6m 3 Bedroom 2 Module\Renders\Videos](#)

PANORAMA VIEWS:

- KITCHEN: <https://api2.enscape3d.com/v3/view/a94f3739-5e62-4bfd-bb08-2a2ef0138236>
- LIVING AREA: <https://api2.enscape3d.com/v3/view/d4bb6357-b133-4bb5-9015-a1c91ccf95bb>
- BATHROOM: <https://api2.enscape3d.com/v3/view/a62288c9-4a4a-41cc-93d9-d3d34351d055>
- BEDROOM: <https://api2.enscape3d.com/v3/view/99e4d720-cc60-4f56-b49e-412d34b964a7>
- VERANDAH: <https://api2.enscape3d.com/v3/view/eb441983-3962-4f22-b2c8-3c6da1f8f487>

Northern Transportables ABN 22 009 636 882

Head Office: 36 Lillwall Road East Arm NT 0822 | Sales Village Display: 840 Stuart HWY Pinelands NT 0829

Ph 08 8995 6500 | enquiries@northerntransportables.com | www.northerntransportables.com.au