

PROJECT PROFILE



NEWMONT

Located in the depths of the Tanami Desert, our buildings were designed to withstand the harsh conditions and complement the existing structures. Effective communication and collaboration between project stakeholders—including the client, designers, sub-contractors, and project managers—were essential to ensuring the success of this project. Location-specific requirements, including environmental factors and the long journey, also played a key role in the project's planning and execution.

Working closely with Newmont, Northern Transportables developed modern VIP accommodation, laundry, and locker room facilities. The overall project requirements aimed to accommodate up to 115 personnel, featuring the following configuration:

- 28 x 4-person buildings
- 1 x 3-person building
- 3 x laundries and locker rooms

Newmont™ **Sven Jarver** | PROJECT DIRECTOR – TANAMI EXPANSION

“I would just like to pass on my personal thanks to you and the entire Northern Transportables team for the effort in helping us to deliver the Tanami Expansion 2 Village Expansion.

The buildings that you have designed, manufactured and dispatched for the DBS Village are a key enabler to our expansion project and to achieve this in line with the original production schedule, on budget and to a high standard of workmanship is a credit to your team.

From all reports you have been an excellent project partner to work with, from the initial concept work, through the design development and approval process, manufacture, factory inspection and dispatch including the challenges of preparing buildings for their journey along the Tanami Track.

Local economic development is an absolute critical part in delivering such a large project in the Northern Territory and it is through key partnerships with locally owned and operated businesses such as Northern Transportables that help us to achieve our goals and ultimate success.

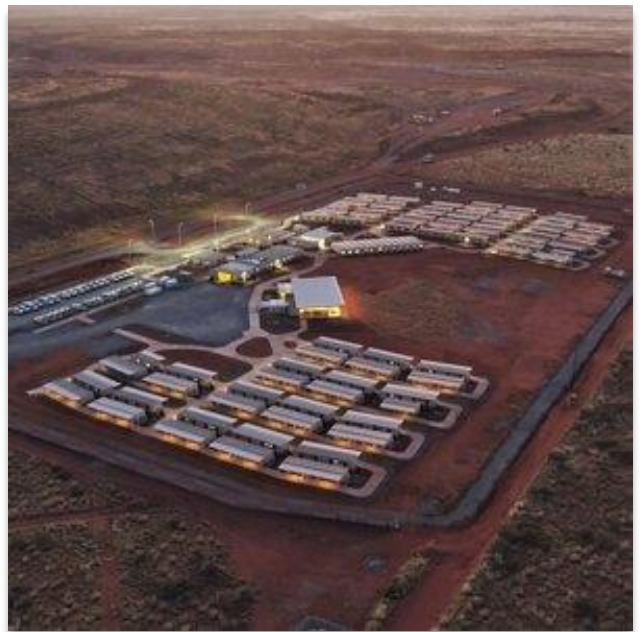
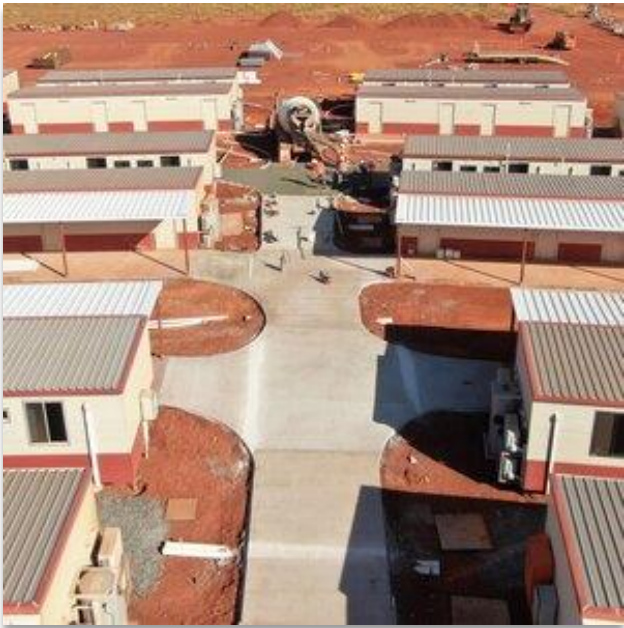
We look forward to opportunities to work with you again in the future.”

Newmont™ **Brodey Phillips** | LEAD STRUCTURAL ENGINEER – TANAMI EXPANSION 2

“Thank you very much for a hassle-free project. It has been a pleasure to work with you both and really appreciated all of the teams effort up there!

The village expansion is critical to the Tanami Expansion 2 project and to have it delivered on time and within budget is an excellent result.”

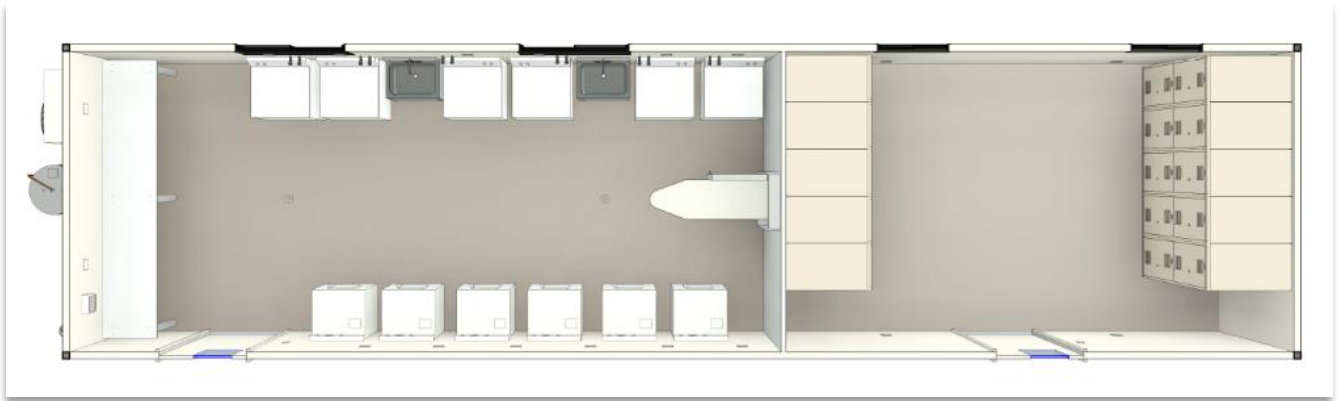




4 PERSON VIP ACCOMMODATION | 14.4 X 3.3



LAUNDRY & LOCKER ROOM | 13 X 3.3



3 PERSON VIP ACCOMMODATION | 14.4 X 3.3

