



NORTHERN TRANSPORTABLES

www.northerntransportables.com



Phone: (08) 8947 4070

Fax: (08) 8947 4080

Email: enquiries@northerntransportables.com

Website: www.northerntransportables.com

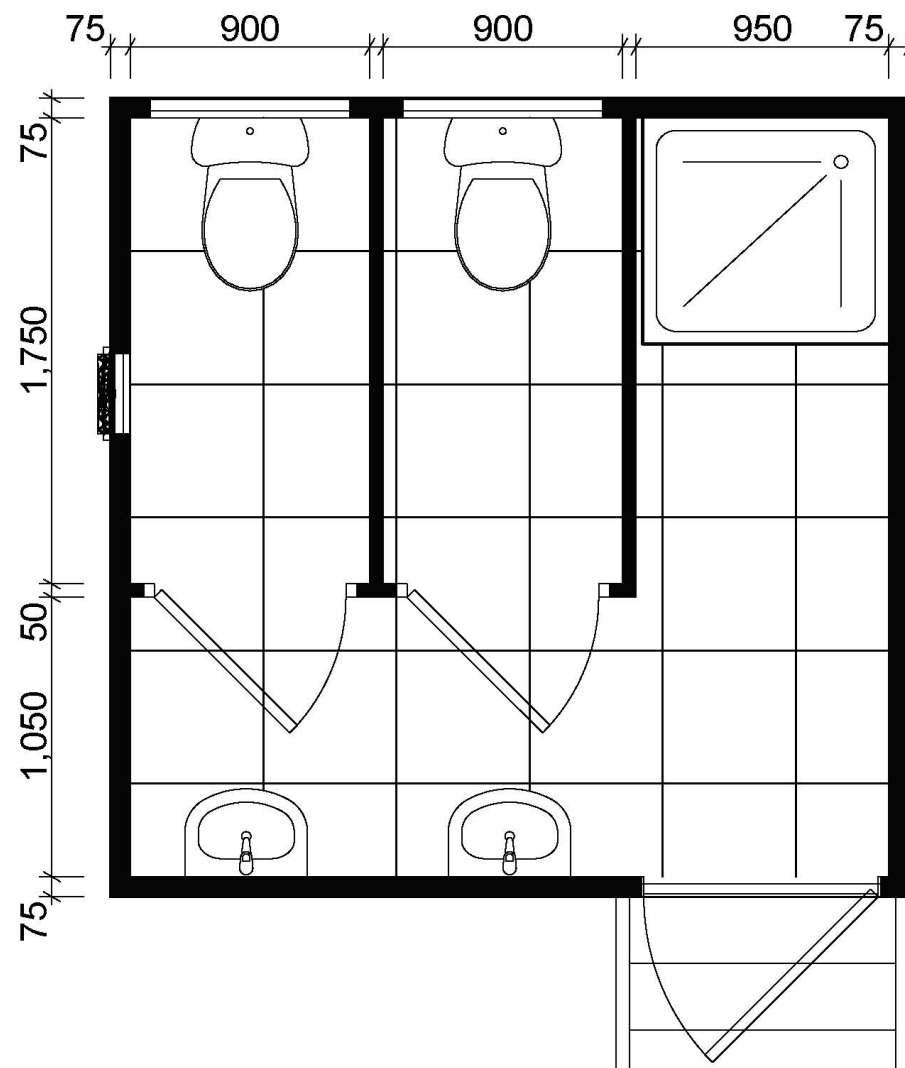
Ablution Double: Toilet/Shower



Building Specifics:

- Hard sheet vinyl covered to wet areas.
- 17mm structural ply flooring.
- 3mm ply ceiling lining.
- External walls to be 75mm Bondor panels.
- Internal walls to be 50mm Bondor panels.
- 2400 high ceilings.
- 50L electric hot water system.
- All buildings designed and certified in accordance with NTH standard drawings.
- Built to BCA requirements.
- Plumbing to Australian Standards.
- Electrical wiring to Australian Standards.

Dim: 2400 wide 3000 long





More Specifics:

- R3.2 E-therm insulation with thermal break between ceiling joists.
- Aluminium cornice to ceilings and walls.
- Sliding glass windows.
- Panel external doors.
- Fly screens to windows.
- RAC air conditioning.
- Laminated bench tops and cabinets.
- Acrylic shower enclosure.
- Chrome shower rose and tapware.
- Vanity cabinet and chrome flickmaster.
- Toilet pan and cistern.
- Double Bowl S/S with sink and flickmixer.

Portable Homes & Offices at Your Service

Your Notes:

Optional Upgrades:

- CFC floor sheeting.
- Gyprock ceiling lining.
- 55mm gyprock cornice.
- Colourbond cladding to external Bondor wall panels.
- Steel stud external and internal wall panels with linings.
- 2700 high ceilings with fans.
- Split system air conditioning.
- Security screens.
- Sliding glass doors.
- Louvre windows.
- Gas hot water system.
- Solar hot water system.
- Verandahs.
- Stairs.

